

# NORTHERN

L I G H T S

September 2020



**Beltrami Electric  
Cooperative Inc.**

® Your Touchstone Energy® Cooperative 

## MAKE TIME FOR SAFETY

### AVOID HAZARDS WITH OVERHEAD POWER LINES

Fall harvest is the most likely time of year for farm-related accidents and fatalities. The number one factor in electrocution on the farm is an auger that hits a power line when being moved. Be aware of your surroundings and look up often.

**Safe Electricity offers the following harvest safety tips:**

1. Check the height of the farm equipment to determine clearance.
2. Be aware of the location of power poles and lines, including field entry and exit points, and plan a safe equipment route.
3. Always keep a minimum 10-foot safety radius around an electric line.
4. Use a spotter when moving tall loads near electrical lines.
5. Lower extensions to the lowest setting when moving equipment.
6. Never attempt to move a power line out of the way or raise it for clearance.
7. Know what to do if your equipment does make contact with a power line. It's almost always safest staying in the cab. Call 9-1-1, warn others to stay away, and wait until the electric utility says it's safe to get down.

Learn more at:

 **Safe  
Electricity.org**





**Northern Lights (USPS 016488), Vol. 67, No. 9**

Northern Lights is published monthly by Beltrami Electric Cooperative Inc., 4111 Technology Drive N.W., Bemidji, Minnesota 56619-0488. Subscription rate \$5. Periodicals postage paid at Bemidji, MN 56601.

**Postmaster:** Please send address corrections to Beltrami Electric Cooperative Inc., P.O. Box 488, Bemidji, Minnesota 56619-0488.

**Office Hours:** 8 a.m. to 4:30 p.m.  
Monday – Friday

**Member Service:** 218-444-2540  
or 1-800-955-6083

[www.beltramielectric.com](http://www.beltramielectric.com)

**Board of Directors**

Chair	Rick Coe, DISTRICT 6 <i>(Minnkota Director)</i>
Vice Chair	John Lund, DISTRICT 7
Secretary	Murl Nord, DISTRICT 1 <i>(Square Butte Director)</i>
Treasurer	Judy Honer, DISTRICT 9
Directors:	Charlie Perkins, DISTRICT 2; Charles Parson, DISTRICT 3; Craig Gaasvig, DISTRICT 4; Robert Wallner, DISTRICT 5; Sue Kringen, DISTRICT 8
President and CEO	Jared Echternach
Editor	Angela Lyseng

**Minnesota State Electrical Inspectors**

*Beltrami County*

**Wade Koons**

218-255-3011 - [wade@koonsinspections.com](mailto:wade@koonsinspections.com)

*Cass and Hubbard Counties*

**Anthony Kohrs**

218-255-1046 - [kohrsinspection@paulbunyan.net](mailto:kohrsinspection@paulbunyan.net)

*These are the inspectors covering the area served by Beltrami Electric. They can be reached by phone Monday through Friday between 7 and 8:30 a.m. or by email as indicated.*

**Gopher State One Call 811**  
1-800-252-1166 or 811  
[www.gopherstateonecall.org](http://www.gopherstateonecall.org)

Anyone who plans to dig is required by law to notify the state of their intentions at least 48 hours in advance.

All digging requires the 48-hour notification so that buried telephone lines, television cables, pipelines, utility electrical lines, and municipal water and sewer lines can be located to ensure that none will be severed or damaged.

**Mission of Beltrami Electric Co-op**

*To provide excellent value to our members through the safe delivery of reliable electric service, excellent member service and innovative energy solutions at fair and reasonable prices.*

*This institution is an equal opportunity provider and employer.*



## Make your voice heard

Jared Echternach, *President and CEO*

There's an old political saying, "If you're not at the table, you're on the menu." This adage is the perfect answer to the question, "Why vote?" It's a blunt description of what happens when you don't engage in the political process.

If you don't vote, you're not only missing the opportunity to support a candidate that shares your views and concerns, you're allowing others to chart a course that impacts your future. That's why we're encouraging all Beltrami Electric Cooperative members to recognize National Voter Registration Day on Sept. 22, 2020.



**Your vision, your vote**

While local elections may not be as exciting as the high-profile presidential election, they are just as critical. Local elections have a direct impact on your community and on your quality of life.

Like the national level, local elections represent who we are as a community, and more importantly, where we want to go. Whether it's an election for a mayor, county commissioner, state representative, school board or an electric co-op board member, your vision for the community is tied to your vote.

Voting keeps elected officials accountable. Elections are a direct and tangible source of feedback. For example, Beltrami Electric's board members provide strategic guidance on the direction of your co-op and how it serves our communities. Local board members embody the voice and identity of the communities we serve.

**Staying in sync with the community**

Ultimately, the role of the co-op board is governance. While day-to-day decisions are made by our employees, governance

and strategic decisions are made by the board, whose mission is to look out for the vitality of the co-op and the members we serve. Beltrami Electric's board members provide their perspective on community priorities, thereby enabling us to make more informed decisions on long-term investments.

A strong voter turnout shows investment in the community and ensures that a diverse number of views are represented. The whole community benefits when more people participate in the process, because greater numbers reflect a consensus on the direction of the future and the will of the people.

By voting in national, state and local elections, you are serving as a role model for your family, friends and colleagues. The act of voting demonstrates your support for the community and helps officials chart a course for the future. Democracy is not a spectator sport. Research candidates, learn about issues that are on the ballot and get out and vote!

To learn more about National Voter Registration Day or to get involved, visit [www.nationalvoterregistrationday.org](http://www.nationalvoterregistrationday.org).

**80<sup>th</sup> annual meeting**

Beltrami Electric Cooperative held its 80<sup>th</sup> annual meeting on Wednesday, Aug. 12, at our headquarters facility in what will be one for the record books. It was our first annual meeting held during a pandemic, and as a result, we practiced the recommended safety measures and conducted only the essential functions of the business meeting. There were no meals, no prizes and no guest speaker. Thank you to those who attended either in-person or online through our YouTube channel. Fortunately, our bylaws provide for voting by mail or electronically, a process that lends itself well under the current circumstances. Members approved last year's minutes and elected directors Charlie Perkins, Craig Gaasvig and Rick Coe. Congratulations to Charlie, Craig and Rick. We look forward to resuming a more normal annual meeting next year in conjunction with the Beltrami County Fair.

## 80<sup>th</sup> annual meeting recap

Beltrami Electric Cooperative's 80<sup>th</sup> annual meeting looked quite a bit different than meetings of years' past. To ensure the safety of our members and employees due to COVID-19 and safety concerns regarding social distancing, this year's annual meeting was held on Aug. 12, in the community room at the cooperative's headquarters for the limited purpose of conducting essential official cooperative business. To protect all attendees, chairs were spaced six feet apart and masks were required.

The meeting was opened with the



**Charlie Perkins**  
District 2



**Craig Gaasvig**  
District 4



**Rick Coe**  
District 6

pledge of allegiance, followed by the invocation offered by board treasurer Judy Honer. Board chair Rick Coe welcomed attendees to the meeting and introduced the cooperative's board of directors. The meeting agenda included a financial update from Director of Finance and Corporate Services, Arlene Hogquist, as well as a cooperative update from President and CEO, Jared Echternach. There was no meal, door prizes, giveaways or guest speaker this year.

The election results were as follows: In District 2, incumbent director Donald (Charlie) Perkins, Sr. ran unopposed and received 2,002 votes. Incumbent District 4 director Craig Gaasvig was re-elected with 1,406 votes, candidate Valerie Wallingford received 767 votes. In

District 6, incumbent director Rick Coe ran unopposed and received 1,996 votes. In addition, the 2019 annual meeting minutes were approved by majority vote of the members.

This year's meeting was live-streamed on the cooperative's YouTube channel and is now available for members to view on both our website at [www.beltramielc.com](http://www.beltramielc.com) under "My Cooperative/Annual & District Meetings" or by visiting our YouTube channel. Next year's meeting is tentatively scheduled for Wednesday, Aug. 11, 2021.



## BELTRAMI ELECTRIC EMPLOYEE NEWS



### **DEREK PELDO**

Beltrami Electric Cooperative welcomes Derek Peldo to our cooperative team as our I.T. administrator. Derek is a graduate of Ellendale High School in Ellendale, N.D., and attended the University of Minnesota-Crookston. Derek has experience as a network administrator and microcomputer specialist. He enjoys playing

softball and collecting vintage computers, parts and software. Derek and his wife, Lisa, live in Clearbrook with their sons, Anthony and Evan, and their dog, Lucky.



### **JANICE RENNER**

Beltrami Electric Cooperative welcomes Janice Renner to our member services team as our member services lead. Janice has a degree in business administration from Bemidji State University and worked for more than 23 years at MAHUBE-OTWA as an energy assistance manager. She enjoys vegetable gardening,

paddleboarding, kayaking, cross-country skiing and more. Janice and her husband, Jeff, have two adult children, Alex and Julia, and live in Park Rapids with their two dogs, Maggie and Mika.



### **KATHY DREHER**

Beltrami Electric Cooperative would like to give a warm welcome to Kathy Dreher, who has joined our member services team as our cashier/receptionist. Kathy is a graduate of Bemidji State University and has prior experience in customer service.

Kathy and her husband, Ed, live in Bemidji. She enjoys crafting and spending time with her animals, which include their dog, Ernie, two cats and 10 chickens.



### **KARLEE TOWER**

Karlee Tower recently accepted the position of member service representative. Karlee has been the friendly face at our front counter as our cashier/receptionist since October 2018. She is a Bemidji High School graduate and attended Northwest

Technical College and Bemidji State University. She enjoys spending time with family and friends. Karlee currently lives in Bemidji with her dog, Izzy.



# Vegetation Management Program

SAFETY • RELIABILITY • AFFORDABILITY

Here in the Northwoods, trees beautify our yards, provide us with shade and naturally attract climbing children. However, when trees grow to interfere with power lines, they become safety hazards, and are among the most common causes for utility outages. Our



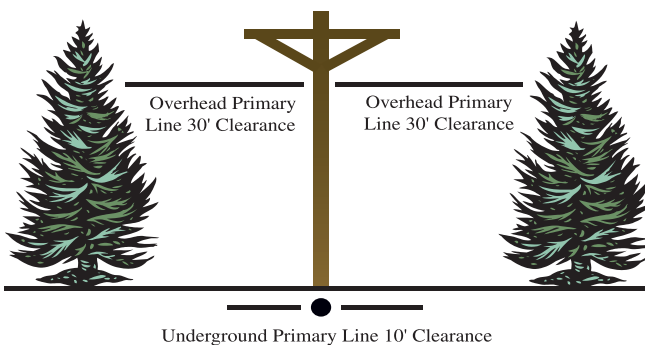
Vegetation Management Program (VMP) is the process we use to clear trees/vegetation that extend into the right-of-way corridor.

With more than 3,500 miles of electric lines that provide power to your homes and businesses

throughout our service area, there are numerous trees growing near or into lines that require trimming and management. Usually it's because a tall-growing tree was planted directly under or too close to the line. It might have grown taller than the person who planted it expected. Whatever the reason, it is crucial they are a safe distance from the lines.

## WHAT IS THE RIGHT-OF-WAY (ROW) CORRIDOR FOR AN ELECTRIC LINE?

To understand why we do what we do, you first need to understand what it is we are talking about. An electric or power line right-of-way (ROW) corridor is a strip of land that an electric utility uses to construct, maintain, repair or replace overhead and underground power lines. The ROW allows the utility to provide clearance from trees and other things that could interfere with line installation, maintenance and operation. Beltrami Electric requires a 30-foot clearance on each side of the poles and a 10-foot clearance on each side of underground lines.



Beltrami Electric will be removing trees and brush within the overhead corridor during the upcoming year in the following townships: Roosevelt, Alaska (East and West). Some additional clearing will take place in Red Lake and Ponemah, cleaning up areas affected by the 2018 storm.

## Beltrami's three-step right-of-way corridor maintenance cycle

**STEP 1:** Trees and brush are removed from the corridor.

**STEP 2:** Selective spot treatment with an EPA-approved biodegradable herbicide where there are unwanted trees, brush and noxious weeds. This includes poison ivy around the utility poles and trees and brush that will eventually interfere with electrical service, reliability or accessibility. (This does not include areas near gardens or mowed areas.)

**STEP 3:** A review of any areas that may have been missed in prior herbicide treatments will follow 1-2 years after step two. Subsequent maintenance cycles follow in 8-10 year increments, which will be less intensive due to the decreased amount of trees and brush.

## WHY DO WE CLEAR RIGHTS OF WAY?

We clear rights-of-way for three main reasons – to maintain the safety, reliability and affordability of your electric service. Line crews need proper clearance to be able to drive their trucks and equipment into the right-of-way to safely perform maintenance and repair work.

## SAFETY

Your safety is a top priority of your electric cooperative. A tree that is growing too close to a power line creates a potentially deadly hazard. It provides a clear path for a child to climb from safety into the danger zone. Danger increases when trees and power lines make contact, but the tree does not even need to be touching the line to cause deadly results. Electricity can jump, or arc, from the power line to a nearby conductor, such as a tree. An effective right-of-way program helps keep our littlest members safe.

## RELIABILITY

Service reliability, after safety, is a key responsibility of your electric co-op. You hear thunder rumbling in the distance. A storm is coming. Do you know that your chances of receiving uninterrupted service through a storm are greatly increased if your electric cooperative maintains clear right-of-ways? Wind and ice buildup can cause trees and limbs to fall on power lines. An effective VMP keeps many of the potential problems away from power lines and improves reliability for you and your neighbors down the line. One tree growing too close to your neighbors' power lines can knock out power for hundreds of others – including you. Proper clearance today prevents inconvenience tomorrow, reducing blinks and power surges.

## AFFORDABILITY

An electric cooperative is a not-for-profit business, which means we provide a service and cover costs. When trees grow too close to power lines, the potential for costly repairs also grows. Suddenly, minor restoration efforts become major restoration efforts. In order to restore outages in the shortest amount of time, our lineworkers need to be able to drive our large trucks into the right-of-way. If there are obstructions such as trees or heavy brush, our crews are delayed in restoring electricity, thus leaving our members in the dark for an extended amount of time.

# Why did my lights blink?

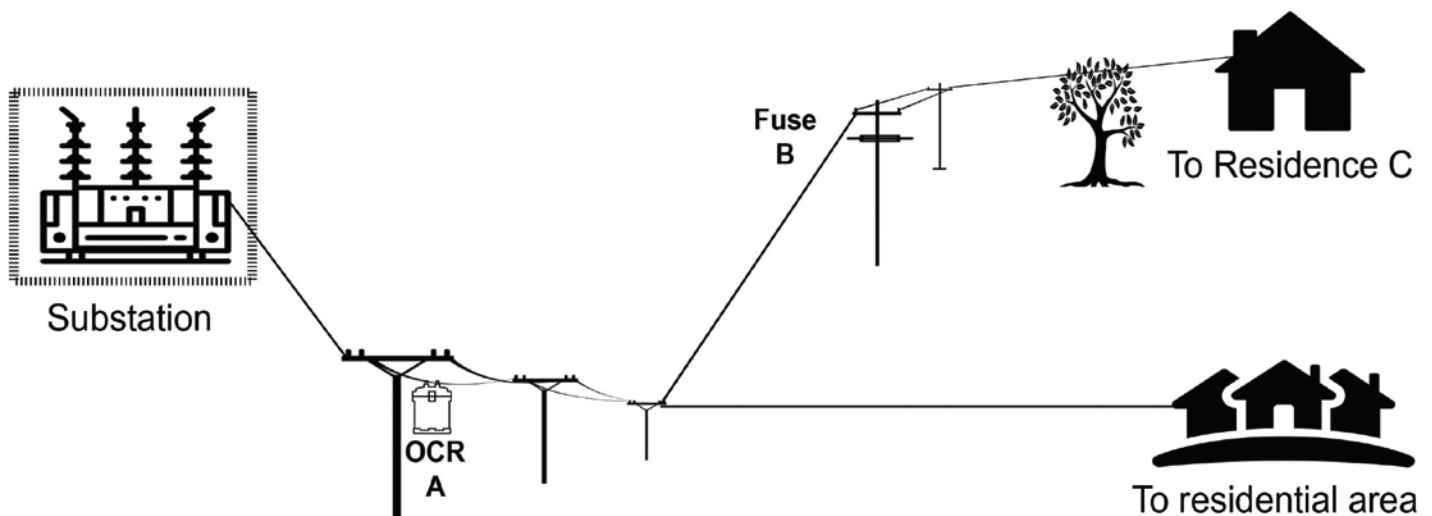
Have you ever noticed your lights blink during a thunderstorm? How about coming home from work, or worse, waking up in the morning to find your electronic clocks blinking? The power line that serves your home probably experienced a blink or brief power interruption. There are basically two reasons why these blinks occur. A blink can occur because of a fault (short circuit) on the power line, or the operation of a protective device working in reaction to a fault.

A temporary fault on a power line will result in a quick blink and can be caused a number of ways, including: wires slapping together during a storm, a cow rubbing on a guy wire, a tree branch hitting a power line, a bird or animal touching an energized part and grounded part at the same time, lightning, a vehicle hitting a pole or equipment or other similar events.

If the damage to a line is severe enough, a fault can allow a large amount of electric current to flow through the lines. Beltrami Electric Cooperative has installed protective devices on our power lines, called OCRs (oil circuit reclosers, sometimes called breakers) and fused cutouts (fuses) that detect these fault currents. When the fault current exceeds a certain limit, the fuse in a fused cutout will blow and disconnect a section of line. An OCR reacts to a fault by beginning a series of internal switching operations. It opens and closes a switch, as many as three times, testing to see if the fault has cleared itself. On the fourth operation, if the fault is still there, the OCR will remain open and disconnect the line segment. In either case, a line crew will have to repair the damaged power line and then refuse the cutout or close the OCR to restore electric service.

Beltrami Electric Cooperative improves service reliability by coordinating the operation of OCRs and fuses on a power line circuit. This coordination limits the number of members that may be affected by a fault on a segment of line.

This sectionalizing plan works as follows:



A storm passes through and a tree branch touches on the line between Fuse B and Residence C. The tree branch creates a fault that causes Fuse B to blow. There is now an outage at Residence C and a crew will have to repair the damage caused by the tree branch and then refuse the cutout at B to restore service to Residence C. However, if your home is in the residential area past OCR-A, and the tap to Residence C, you still may experience a blink in your lights. This blink is intentional and is caused by an operation of the OCR. This operation is designed to allow time for the fuse to blow and separate the damaged power line from the source. If after a few blinks (four or fewer) the lights in the residential area return to normal, the sectionalizing plan has worked. The problem line has been isolated from the rest of the circuit and limited the number of members without power.

There is no need to report occasional blinks to BEC. However, if a member frequently experiences numerous blinks, please contact our office so that we may look into it to determine if there may be an issue like a tree touching a line that we could address and correct.

# CLASSIFIEDS

## Classified ads rules

- Ads are due by the first of the month prior to publication of the next issue. Example:
  - o Ads submitted by September 1 will be published in the October issue.
  - o Ads submitted between September 2 and October 1 will be published in the November issue.
- Ads may be submitted via our website at [www.beltramelectric.com](http://www.beltramelectric.com) (preferred).
- Include your name and Beltrami Electric account number on all submissions.
- All ads must be **50 words or fewer** and typed or printed clearly.
- Members may only submit one for sale and one wanted or free ad per issue.
- No real estate, rental, personal or commercial ads will be accepted.
- Ads are published at no charge as space permits on a first-received, first-printed basis, **with no guarantee your ad will appear.**
- Ads are only allowed to be repeated for **three consecutive months** and must be resubmitted each month.
- Editor reserves the right to edit or reject any ad.
- All telephone numbers are presumed to have a 218 area code unless otherwise noted.
- Mail ads to: Beltrami Electric Cooperative, P.O. BOX 488, Bemidji, MN 56619.

## For Sale:

Old 220V arc welder w/hood \$40, 12 heavy-duty bronze Andersen door hinges 6LH, 6RH, new \$55 each, asking \$25 each, Delta Sidekick trim and frame saw \$110, JD axle for 100 series lawn mower, used, but excellent new \$400+, \$100. 444-2280 ask for Steve or leave message.

Orange fiberglass 300-lb type IA ladders. 28-ft extension - \$160; 12-ft step-ladder - \$125; 10-ft step-ladder - \$85; 6-ft step-ladder \$35. 4 foot folding scaffold \$70. 1/2 inch angle drill \$50. 1/2 in angle drill w/extension \$135. Greenlee hydraulic quick draw 90 knock-out punch, \$300. 766-6376.

27" Toshiba stereo TV and VCR, each with remote. \$75 for both. 13" Admiral stereo TV with remote. \$40. Bemidji area. Cell phone: 612-812-8159.

Duck boat - Otter Stealth 2000. It's a couple of years old but in solid shape. \$400. 14' John boat - \$250. Contact Mark at 612-382-9049.

DOWNSIZING: Bike rack, mounts on back of vehicle; like new; \$80. 556-2825.

Canoe 17-ft Core Craft, with paddles, stored in shed, weight 70 lbs., good condition, \$300. Call 751-2593. If no answer, leave message.

Browning BSS 12-gauge side by side (manufactured in 1978); 28" barrels, choked modified and improved cylinder; single selective trigger, beavertail forearm, auto ejectors, and a checkered pistol grip walnut stock. 3" chambers. Used, in very good shape. Call Jim at 759-9235.

Diamond "Nuclear Ice" youth bow with practice

arrows, hard case. "Digital Pink" color. Excellent condition. For kids 4-10 yrs. Fully-machined aluminum riser, beyond-parallel limbs, pivoting limb pockets, smooth cams. IBO speed: 187-195 fps, weight: 2.9 lbs., let-off: 70%. Draw length adjustments 14"-24". Draw weight adjustments 10-29 lbs. \$300. 368-4834.

ORCO rug loom Model 70, has a 10-count reed, some warp and a Fraser rag cutter with extra blades, \$400. Also Firestone Transforce HT tire, 10 ply, LT275/70R18 with only 2,000 miles on it \$25. 398-0345.

Delta planer, 13in x 5in with dust vacuum. \$450. 835-7484.

Propane refrigerator, 15 cu. ft. 2-door, upper freezer/lower fridge. Propane freezer, 15 cu. ft. ALL freezer. Both lightly used, like new. "Platform" bed frame. 16' Lund (plain jane) fishing boat and trailer. No leaks. 556-9440.

Yamaha Digital Piano P-96 (like new) (52" wide on stand) \$400. 46" Samsung TV (works fine- 10-yr old), \$100. 760-0718.

Ladder/canoe rack for Ford Ranger p/u. All welded 1 1/2-in. square tubing. Length 10 feet. Width 50 inches. \$500 cash firm. 854-7444 before 8:30 p.m.

1976 Ford Elite, 17,303 miles, 2-door hardtop, V8, black exterior, red interior, excellent condition. \$9,500/obo; 1955 Ford Convertible Sunliner, \$30,000/obo; 1950 Chevrolet Convertible, all original, \$35,000/obo. Forty-year collection of old car parts, all must go, make offer. 333-3916.

Paint from L&M, Majic latex flat exterior barn and fence, white 5-gallon seal broken 7/27/20 never touched. Red Classic 2.5-gallon both resealed with lids \$40 for both. Quick hitch type #1, never used, \$90. Antique welder arc, \$50, Pull-behind sprayer 40-gal, \$125. Text 209-1863.

Craftsman lawn tractor, engine shot, parts only, good blades \$75/obo. 766-9447.

1975 JD450C John Deere Crawler Bulldozer bucket and backhoe, \$19,000. 18' homemade cedar strip boat, fiberglass coated, \$1,500. 16' Fiberglass boat/trailer/70 hp motor, \$1,000. Ford tractor, partly restored, \$1,200. 679-3681.

Paint sprayer, model 262805. Includes metal

spray gun and paint hose. Excellent condition. \$100. 586-3424.

Mixed firewood: Cut, split and dried. \$55 standard pickup load. You haul. Kelliher area. 320-256-7255 or 320-557-8080.

Central Boiler wood stove, excellent condition. 335-6859.

10 hp Bolens estate keeper w/42-in. mower and 30-in. snowblower, \$200. Free-standing circular fireplace, 28-in. diameter fire area, includes 8-ft. of chimney, \$275. 333-3836.

2004 Kountry Star 5th wheel RV, 36-ft, 3 slide-outs, very clean, one owner, \$11,000. Call 702-496-6437, Pennington area.

Central Boiler water wood outside stove, very good shape. 586-2990.

1941 Magic Chef propane cook stove, model 1414, burner newly serviced-great shape, tube frame, 44"w x 36"h x 24"d, oven shut-off valve needs work. \$1,000 cash. Bemidji area. 556-0968.

Golf clubs, \$50. Older armoire, headboard for queen-size bed, nightstand, \$200. 759-1737 or 766-8781.

Large horse, 2-wheel cart, \$350. 7-gallon aquarium, like new, \$15. Table saw, \$50, saddle, \$70, 10x18 glass antique pickle jar, \$50. 243-3112.

## Wanted:

Pet sitting in your house or mine. 766-6510 leave message.

Sugar beet truck drivers wanted: Oct. 1 until end of harvest. CDL license not required. Ege-land Farms, Fisher, Minn. Call 218-779-8252 or 701-739-1783.

Three-wheel bike. Manifold for a Farmall M. 243-3112.

## Free:

China hutch, 48-inch high upper section w/ lighting, 30-inch high lower section. Good shape. 751-4744.

Interior door with frame some damage. 766-9447.



## Grant Application Deadline Sept. 25, 2020

To be considered at the October 2020 meeting, grant applications must be received by **Friday, Sept. 25, 2020**. Community organizations and nonprofit groups may apply for an Operation Round Up grant by completing and returning an application form. Grant applications and requirements are available at the BEC office or by visiting our website at [www.beltramelectric.com](http://www.beltramelectric.com).



**Beltrami Electric will  
be closed on**

**Monday, Sept. 7,  
2020,**

**in observance of the  
Labor Day holiday.**

## Statement of Operations Year-to-date: June 2020

	June 2019	June 2020
Operating Revenue.....	\$ 30,455,363	\$ 29,599,425
Cost of Purchased Power.....	\$ 20,218,413	\$ 19,584,378
Other Operating Expenses.....	\$ 7,924,462	\$ 7,765,065
Total Cost.....	\$ 28,142,875	\$ 27,349,443
Operating Margin.....	\$ 2,312,488	\$ 2,249,982
Other Margins.....	\$ 32,978	\$ (120,440)
Total Margins .....	\$ 2,345,466	\$ 2,129,542
kWh Sold .....	276,396,356	263,097,292
Average Meters Billed .....	21,156	21,416



# ARE YOU A "SNOWBIRD"?

## Ensure you receive your Northern Lights!

Do you close your home or cabin for the season and head to warmer regions? Do you have the post office forward your mail? Did you know that the USPS will forward your electric bills to your new location, but they will not forward your monthly Northern Lights newsletter?



They send them back to the cooperative and, in turn, charge us a return fee for each issue.

A great solution for both you and your cooperative is to notify our member services department of your new address so we can set up a seasonal address for you. You can choose the date to start and stop forwarding, and you can even set up a recurring forwarding address to start and stop the same time each year.

By notifying us, you can ensure that you receive your Northern Lights member newsletter and also help the cooperative save by alleviating return postage fees every month. Contact our office at **218-444-2540** or toll free at **800-955-6083**.

*You also have the option to not receive a paper copy of the newsletter if you prefer to view it on our website at [www.beltramielectric.com](http://www.beltramielectric.com).*

# BOARD MEETING HIGHLIGHTS

Beltrami Electric's board of directors conducted its regular monthly meeting Monday, July 20, 2020. A quorum of directors were in attendance.

### The following reports were given:

- President and CEO Echternach made his monthly report, including an update to the cooperative's response to the COVID-19 pandemic, the June financials and legislative issues affecting the electric industry.
- The upcoming annual meeting was discussed.
- Arlene Hogquist discussed the Flexible

Financing for Rural America Act of 2020.

- Chair Coe discussed Minnesota Power and Minnesota Rural Electric Association.
- Directors and president and CEO Echternach discussed various items including upcoming meetings, educational classes and events.

### The following actions were taken:

- Approved the 2020 official ballot.
- Approved the consent agenda.

*The next board meeting will be Wednesday, Sept. 30, 2020.*

# 2020 unclaimed capital credits list

*The following capital credit checks were returned to Beltrami Electric. These former members may contact Beltrami Electric Cooperative by calling the office at **(218) 444-2540** or **(800) 955-6083** or via email at [info@beltramielectric.com](mailto:info@beltramielectric.com).*

<u>Name</u>	<u>Last known city, state</u>
Barrett Jr., Courtney J.	Redby, Minn.
Lajeunesse, Ashley K.	Red Lake, Minn.
Lussier, Felicia D.	Red Lake, Minn.
Pallum, Samantha A. and Ryan R.	Bemidji, Minn.
Sayers Jr., Randal C.	Redby, Minn.
Smith, Bonnie M.	Redby, Minn.
Smith, Edith A.	Cass Lake, Minn.
Thompson, Jasmirre M. and Herbert A. Young Jr.	Laporte, Minn.

# Keep your contact information up to date

Has your address changed? Do you have a new cellphone number? Dropped your landline? Changed your email address? Then it is time to contact your electric cooperative to verify and/or update the information we have on your account. It's more important than ever to keep your contact information up to date to ensure your cooperative is able to reach you regarding billing and account information, outage notifications and reporting, capital credits and more.

If we don't have the correct phone number linked to your home address, it makes it much more difficult for you to report an outage, or for the co-op to notify you when possible of a prearranged outage. At Beltrami Electric we use the phone number you provide to link your service address to our outage management

system. For example, if you call us to report an outage, our automated system instantly recognizes your phone number and can determine the particular service address from which you are reporting an outage. Once you give our system a response, your outage is reported. It's that simple! **BUT REMEMBER** – this only works if your current phone number is linked to your service address.

Visit [www.beltramielectric.com](http://www.beltramielectric.com) or call our member services department at **218-444-2540** or **800-955-6083** and make sure you're up to date.





# Beltrami Electric Cooperative Inc.

® Your Touchstone Energy® Cooperative 

4111 Technology DR NW  
PO Box 488  
Bemidji, MN 56619-0488  
218-444-2540 • 800-955-6083  
www.beltramielctric.com

## Beltrami Electric Cooperative seeking nominations for the 2020 Touchstone Energy® **Community Award**

**D**o you know an organization that has made outstanding contributions to our local community?

Beltrami Electric is seeking applications for the Touchstone Energy® Community Award, which recognizes businesses, nonprofits and community groups that have shown a strong commitment to the community. Any organization that has helped make its community within the areas served by Beltrami Electric a better place to live and work is eligible for the \$500 cash award.

Community members may nominate an organization, association or business by completing the application form, available at Beltrami Electric Cooperative, 4111 Technology Dr NW, Bemidji, or online at [www.beltramielctric.com](http://www.beltramielctric.com). Questions may be directed to Angela Lyseng at 444-3689.

The application will require a description of the project, program or event and the positive impact it brought to the community. **Completed applications must be received at Beltrami Electric's office by Oct. 31.**

"As an electric cooperative serving this area, we have a high regard for community involvement," president and CEO of Beltrami Electric Jared Echternach said. "This award allows us to highlight and encourage those organizations that have shown an outstanding commitment to our community."

The award recipient will be announced in November, and will then contend for the statewide Touchstone Energy® Community Award, which has a cash prize of \$1,000.

The Minnesota Touchstone Energy cooperatives are part of a national

alliance of more than 750 rural electric cooperatives in 46 states that adhere to the values of integrity, accountability, innovation and commitment to community.

For information and to download an application, please visit our website at [www.beltramielctric.com](http://www.beltramielctric.com).

### Past years' winners

- 2004** – Blackduck Tri Sigma General Federated Women's Club
- 2005** – Bemidji Area Task Force on Underage Drinking, Drugs and Gang Activity
- 2006** – Healthy Community Healthy Kids
- 2007** – The Sexual Assault Program of Beltrami, Cass and Hubbard Counties
- 2008** – The Radiothon to End Child Abuse
- 2009** – Bemidji Garden Club (Formerly Northwoods Garden Club of the Bemidji Area)
- 2010** – Bemidji Skate and Bike Association
- 2011** – Kelliher Resource Center Committee
- 2012** – Bemidji Area Take a Kid Fishing\*
- 2013** – Blackduck Area Toys for Kids
- 2014** – Bemidji Area Reading Canines (BARC)\*
- 2015** – Jack Pine Stables
- 2016** – Northland Composite Squadron-Civil Air Patrol
- 2017** – Bemidji Area Cross Country Ski Club
- 2018** – Ruby's Pantry of Bemidji
- 2019** – Village of Hope  
(\*Awarded statewide award)



Touchstone Energy®